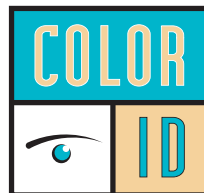


# Real-world Biometric Solutions from HID Global



**HID Signo™ Biometric Reader**



ph: 888.682.6567  
fx: 704.987.2240  
[www.ColorID.com](http://www.ColorID.com)





## HID® Signo Biometric Reader: Bringing Security and Convenience To Your Door

Biometrics have rapidly expanded into our daily lives, as millions of people utilize fingerprints to unlock their mobile phones, or access cash through ATMs. Using fingerprint biometrics for physical access security offers customers convenience as fingerprints are unique, cannot be forgotten, lost or stolen.

The HID Signo Biometric Reader 25B fingerprint device merges credential excellence with globally best-in-class multispectral imaging technology, to deliver a high-powered PACS solution.

### Designed for the “Real World”

In the “real world” people have wet, dirty, oily, dry or worn fingerprints. Yet this presents no challenge for the HID Signo Biometric Reader. The patented multispectral imaging captures both the surface and subsurface fingerprints, giving clear images virtually every time, and consistently outperforms other conventional fingerprint technologies.

When using biometric devices it is common for end users to resort to lowering the fingerprint match threshold to avoid irritating frequent rejections. However, this also increases the chance of false acceptances. HID Global’s multispectral technology ensures security is not compromised for the sake of convenience—you get the best of both worlds.

## Two-Factor Authentication



*"Pick and choose when to implement two-factor authentication for additional security."*

---

### Unmatched Flexibility

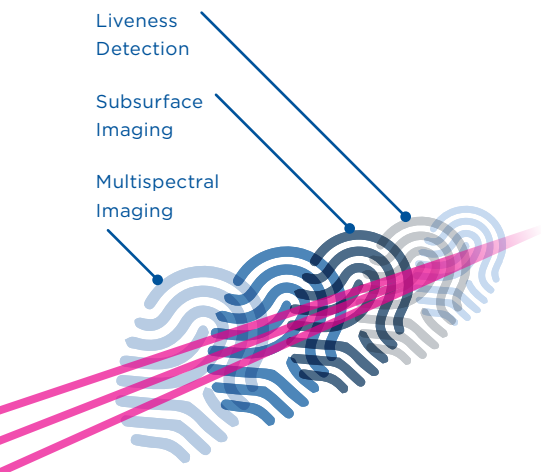
Deploy multiple authentication modes with a single reader platform including biometric fingerprint and contactless physical or mobile credentials. Pick and choose when to implement two-factor authentication for additional security by storing fingerprint templates on card or requiring a combination of fingerprint and mobile.

Each device is interoperable with a broad range of contactless credential technologies including HID Mobile Access, Seos, MIFARE DESFire EV1/EV2 and iCLASS.





*“Multispectral imaging captures the external surface fingerprint, as well as the internal, or subsurface fingerprint for unrivalled security and unmatched usability.”*



### Unmatched Performance

The patented multi-spectral imaging sensor incorporates trusted liveness detection to provide real-time validation that the fingerprint is genuine and real, whilst ensuring superior protection against hundreds of commonly used spoofing materials. Invest in best in class liveness and spoofed finger detection with a NIST certified Impostor Attack Presentation Match Rate of 0%. All this performance in under a second, significantly reducing potential delays and queues at crucial entrances.

### Ready for the Future

Go Mobile! Choose to authenticate with a mobile device at short range just like a traditional physical card, or turn on the “Twist and Go” feature to unlock doors from longer range before you arrive. The HID Signo Biometric Reader provides native support for HID Mobile Access via Bluetooth or Near Field Communication (NFC).

Open Supervised Device Protocol (OSDP) is also available to support bi-directional communication with the door controller, including the option to encrypt this communication via Secure Channel to provide enhanced security.

Each HID Signo Biometric Reader is designed to be configured and upgraded in the field, ensuring the latest features and enhancements are just a few clicks away.



## Secure, Reliable Biometric Performance

### Data Security and Privacy

Data protection is always a crucial consideration, especially in the ever-connected environment in which we live.

Safeguard against costly vulnerabilities with end-to-end security for each user's biometric data. Biometric images are converted into a "template" (a string of data), meaning no image of the fingerprint is ever saved. Templates stored on the device or server are then also encrypted with AES-256 and communication between the server and the device is over industry standard Transport Layer Security.

- Assist end user organizations in their risk assessment and meeting their regulatory and compliance obligations such as Data Protection Impact Assessments (DPIA) under General Data Protection Regulation (GDPR).
- Take control of your identity with template on card with SEOS credentials offering 1:1 identification matching Device BLE settings

### Sleek and Strong Design

The sleek aesthetics disguise the toughness of the HID Signo Biometric Reader, which is designed for installation indoors or outdoors. The device features an IK9 impact rating for vandal resistance as well as an IP67 rating outdoor rating for protection against the elements. The design also caters to the need for rapid installation, with unique clipping features and a single screw, reducing installation times to just minutes.

*"Reliable with*

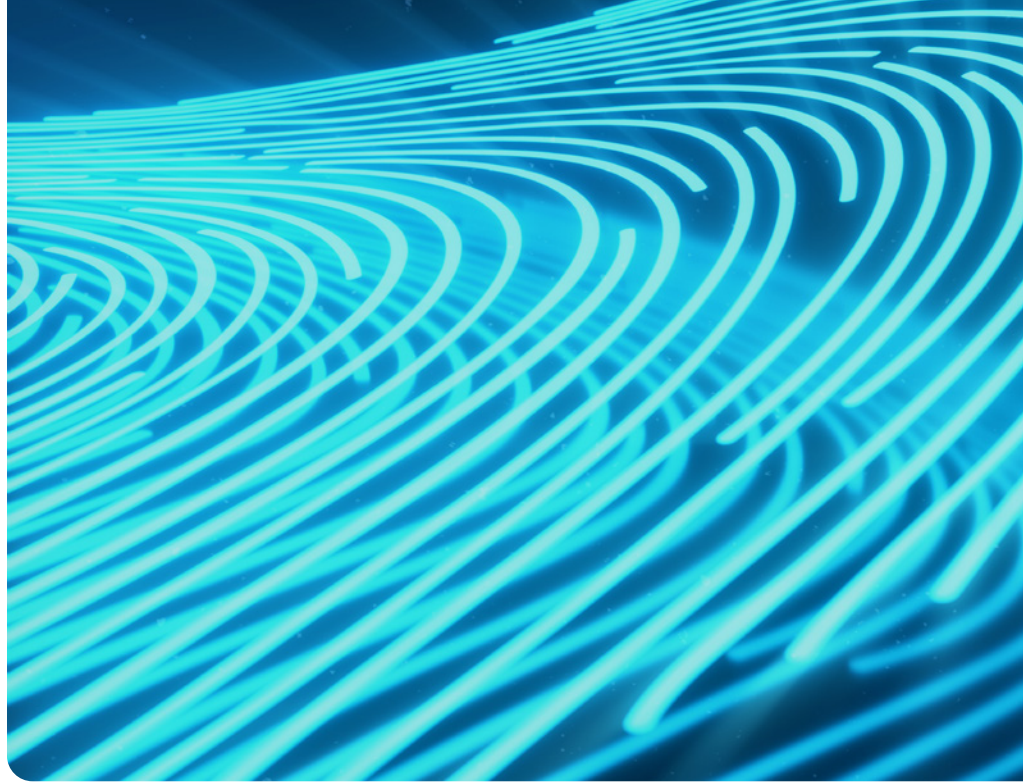
*99.9%*

*accuracy*

*in fingerprint*

*image capture."*





*“Designed to be field upgradable to allow seamless introduction of new features, capabilities and security enhancements.”*

### **HID Biometric Manager™ Software**

Each device includes free access to the web-based HID Biometric Manager software that allows you to manage up to 2000 readers at a time and up to 100 simultaneous users at a time.

This windows application performs configuration and management of the reader, including firmware updates over the network.

#### **Configuration options include:**

- Securely enroll users (up to 10 fingers/user) and encode templates on card
- Select your authentication mode
- Enable and disable credential compatibility
- Load HID Elite keys in the field
- Adjust audio visual settings

### **HID Signo Biometric API**

The HID Signo Biometric API is a cutting-edge on-premises API that enables full integration of HID Signo Biometric devices into any partners' access control system.

For developers, the RESTful API/SDK will deliver a comprehensive, yet easy to use mechanism to control the flow of data between the system and up to 2000 HID Signo Biometric Reader devices to provide device configuration, user enrollment and access control functions.

### **Field Upgradable**

The HID Signo Biometric Reader firmware and the HID Biometric Manager software are field upgradable to allow seamless introduction of new features, capabilities and security enhancements.



## Seamlessly Introduce into Existing Access Control Systems

Upgrading from traditional card readers into a biometric solution has never been easier. Interoperability with a huge range of existing door controllers through support for Wiegand or OSDP (v2.1.7) for PACS data transfer, allows the HID Signo Biometric Reader to slide seamlessly into existing access control systems with added protection with user biometrics.

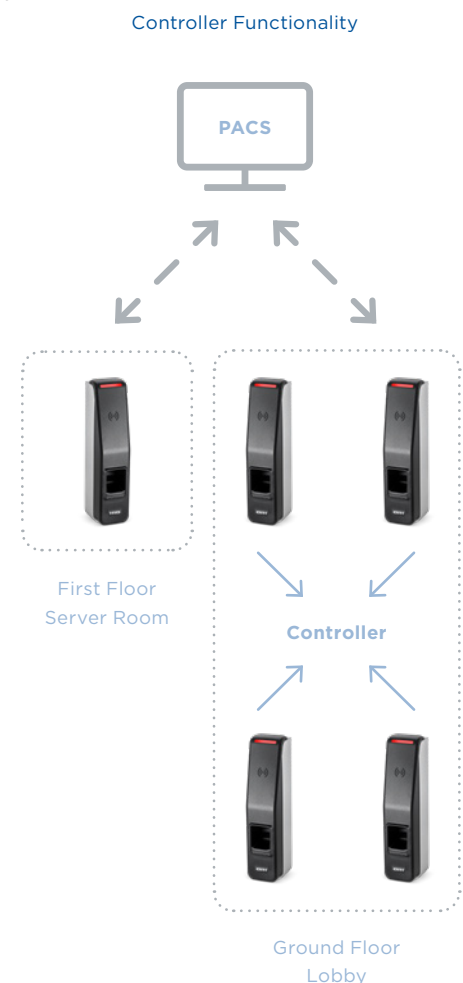
## Deploy as an Edge Device

The device defaults to reader mode operation, but can be configured to operate as a single door access controller performing both authentication and local access authorization functions.

- Simply set the access control policy and the device continues to operate even when disconnected from the network
- Autonomous devices are not affected by temporary network latency or outage – vital for securing high value areas
- Real time access decision with no dependency on external controller hardware
- Bring two factor authentication to remote areas of the building

## Meeting Global Needs

The HID Signo Biometric Reader is globally certified with over 50 individual country-level certifications. HID Biometric Manager software also supports several languages, including Spanish, Portuguese and Arabic.



North America: +1 512 776 9000 • Toll Free: 1 800 237 7769  
Europe, Middle East, Africa: +44 1440 714 850  
Asia Pacific: +852 3160 9800 • Latin America: +52 55 9171 1108

© 2020 HID Global Corporation/ASSA ABLOY AB. All rights reserved. HID, HID Global, the HID Blue Brick logo, the Chain Design, and Signo are trademarks or registered trademarks of HID Global or its licensor(s)/supplier(s) in the US and other countries and may not be used without permission. All other trademarks, service marks, and product or service names are trademarks or registered trademarks of their respective owners.

2020-08-12-pacs-signo-biometric-reader-br-en

PLT-04142

An ASSA ABLOY Group brand

**ASSA ABLOY**



[hidglobal.com](https://hidglobal.com)