



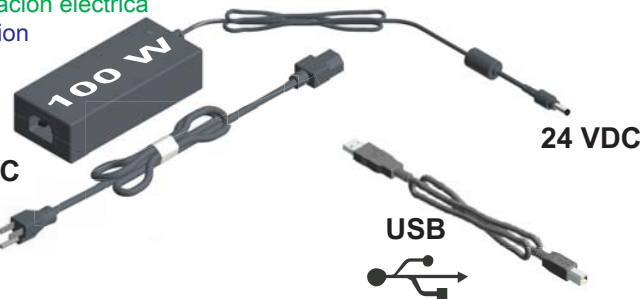
ZEBRA

ZC100/300 Series



Power Supply
Fuente de alimentación eléctrica
Bloc d'alimentation

100 – 240 VAC
50/60 Hz



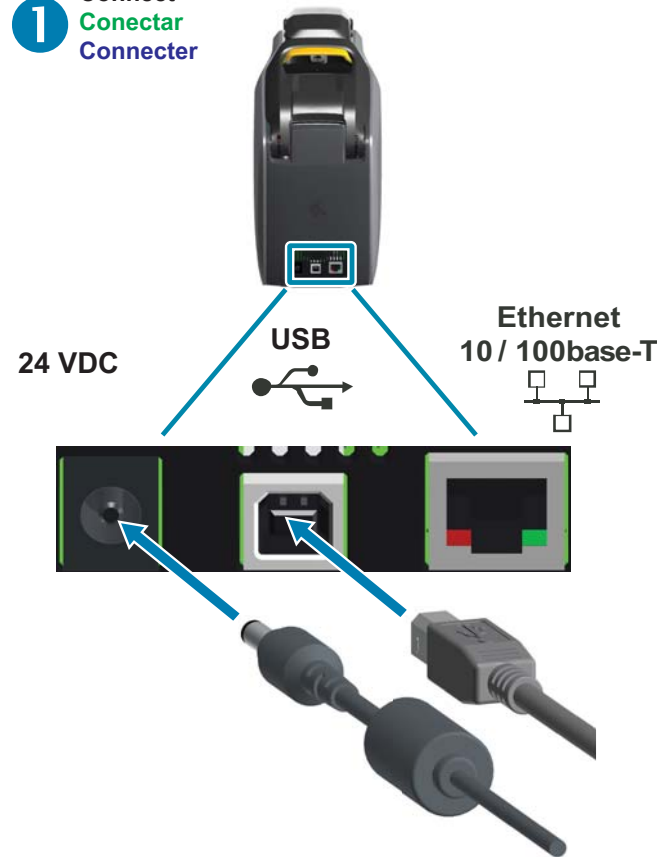
24 VDC

USB



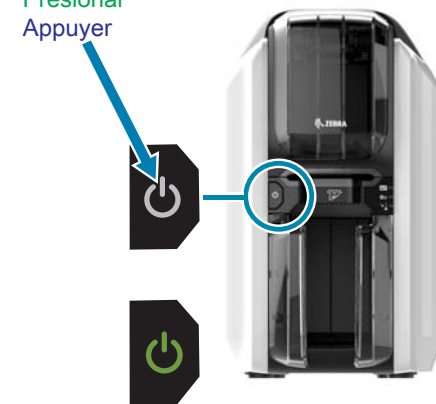
P1094919-102

1 Connect
Conectar
Connecter



2 Power On
Encender
Mettre sous tension

Press
Presionar
Appuyer



(Lit = Power On)
(Indicador iluminado = Impresora encendida)
(Allumé = sous tension)

3 Install Driver
Instale Controlador
Installez le pilote



www.zebra.com/zc100-info
www.zebra.com/zc300-info



888.682.6567

SUPPORT@COLORID.COM

COLORID.COM

©2017 ZIH Corp and/or its affiliates. All rights reserved. Zebra and the stylized Zebra head are trademarks of ZIH Corp., registered in many jurisdictions worldwide. All other trademarks are the property of their respective holders. Printed in China.

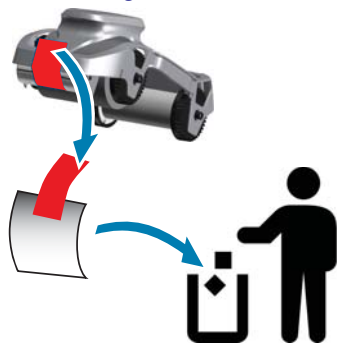


Load Ribbon
Cargar cinta
Charger le ruban

1 Release and Open
Liberar y abrir
Libérer et ouvrir



2 Remove Spool Wrapper
Quitar el papel protector del carrete
Retirer l'emballage du rouleau



3 Insert
Insertar
Insérer



4 Close
Cerrar
Fermer



Load Cards
Cargar tarjetas
Charger des cartes

1 Open
Abrir
Ouvrir



2 Load
Cargar
Charger



3 Close
Cerrar
Fermer



Verify Power On
Verificar que la impresora esté encendida
Vérifier que l'appareil est sous tension

Manual Card Feed
Alimentación manual de tarjetas
Charger manuellement une carte



Feed 1 Card When Lit
Introducir 1 tarjeta cuando se ilumina
Insérer 1 carte quand allumé

Indicators
Indicadores
Indicateurs

Power On
Encender
Mettre sous tension



Power Off
Apagado
Hors tension



Critical Error
Error crítico
Erreur critique



Ready
Lista
Prêt



Card Error
Error de tarjeta
Erreur de carte



Ribbon Error
Error de cinta
Erreur de ruban



Clean Printer
Limpiar impresora
Nettoyer l'imprimante



Clean Printer; Reject Bin Full
Limpiar impresora; Bandeja de rechazo llena
Nettoyer l'imprimante ; bac de rejet plein



www.zebra.com/zc100-info



www.zebra.com/zc300-info