

CREDENTIALS for LF PROXIMITY READERS

CS-AWID-0-0 Clamshell-Type Card

- Rugged white card -- held by hand, clip strap, lanyard
- Molded base – stippled finish, beveled edges
- Includes slot to hang card in “portrait” orientation
- Accepts adhesive or laminated photo ID overlay
- Custom graphics available – logo, multi-color art, text



GR-AWID-0-0 Graphics-Quality Card

- Compliant with ISO and ABA standards for size & finish
- White matte finish for high-quality printing on both sides
- Ready for standard photo ID card printers, both sides
- May be slot-punched for “portrait” or “landscape”
- Custom graphics available – logo, multi-color art, text



GRMAG-AWID-0-0 Graphics Card with Magnetic Stripe

- Includes ½ inch magnetic stripe – embedded & coated
- High-coercivity material for secure programming
- Other coercivity levels available for magnetic stripe
- Customer programs magnetic stripe’s code
- 3 uses – prox access, mag stripe data, photo ID badge



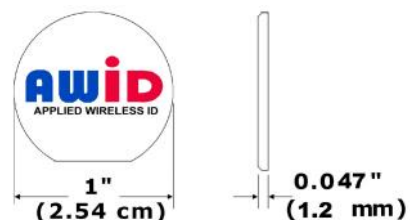
KT-AWID-G-0 Keytag

- Small, flat, “triangle” shape, gray color
- For key ring or keychain, or holding in fingers
- Read range close to range with a proximity card
- Keytag may be carried underwater for pool gates
- ABS plastic material for endurance and long life



PW-AWID-0-0 Proximity Wafer

- Small, thin, white PVC, truncated circle – self-adhesive
- Turns any plastic photo ID badge into a proximity card
- ... or a card with other technology into a dual-tech card
- ... or a non-metal hand-held device into a proximity card
- Reads inside key fob and inside remote control device





Maximum RFID

Read Range* for Credentials with AWID's Readers

Credential Part Number	Voltage Applied to Reader (+DC)	SR-2400	MM-6800, SP-6820, KP-6840	MR-1824, MR-1824HiLo	MR-1824MC, MR-1824HiLoMC
CS-AWID-0-0	12 volts	5.5 in (14 cm)	8 in (20 cm)	24 in (60 cm)	16 in (40 cm)
	5 volts	4 in (10 cm)	6 in (15 cm)	18 in (45 cm)	12 in (30 cm)
GR-AWID-0-0	12 volts	5.5 in (14 cm)	8 in (20 cm)	22 in (55 cm)	14 in (35 cm)
	5 volts	4 in (10 cm)	6 in (15 cm)	16 in (40 cm)	10 in (25 cm)
GRMAG-AWID-0-0	12 volts	5.5 in (14 cm)	8 in (20 cm)	22 in (55 cm)	14 in (35 cm)
	5 volts	4 in (10 cm)	6 in (15 cm)	16 in (40 cm)	10 in (25 cm)
KT-AWID-0-0	12 volts	4 in (10 cm)	6 in (15 cm)	19 in (48 cm)	12 in (30 cm)
	5 volts	3 in (7 cm)	5 in (12 cm)	14 in (35 cm)	9 in (22 cm)
PW-AWID-0-0	12 volts	3 in (7 cm)	3.5 in (9 cm)	10 in (25 cm)	6 in (15 cm)
	5 volts	2.5 in (6 cm)	3 in (7 cm)	8 in (20 cm)	5 in (12 cm)

* "Read range" is maximum reading distance for ideal conditions. Range varies with orientation of the credential, method of mounting the reader, use of a housing for the reader, voltage applied to the reader, and presence of metal.

Reader Selection

- All of AWID's proximity credentials may be read by all of AWID's proximity

Technology in Credentials

- Low-frequency RF communications between proximity readers and credentials.
- Excitation frequency: 125 kHz, transmitting and receiving.
- Read repetition rate: 1 read for each presentation of the credential into the reader's RF field.

Encoding for Credentials

- Code format types: Wiegand-type for general use; other types for proprietary formats.
- Code format options: Number of bits – between 26 and 50 bits total. Open code formats with 26 bits and 37 bits. Reserved facility codes in special 34-bit format.

Information Required in Purchase Order (Include leading zeros in facility code and ID numbers)

- Credential part number and quantity.
- Code format name: *nn*-bit-*FFF*, where *nn* = no. of bits, and *FFF* = 3 letters for format assignment. Example: 26-bit-STD.
- Facility code (also called site code or company code).
- Starting and ending numbers for the sequence of identification numbers.

Environmental Conditions

- Operating temperature: -31° F to +150° F (-35° to +65° C).
- Operating humidity: 0% to 95% non-condensing.
- Sunlight and heat: Do not leave cards and wafers in sunlight in a hot environment, such as inside very hot vehicles.

Size of Credentials

Tag or Card	Width	Height	Thickness
CS-AWID-0-0	3.375 in (85.7 mm)	2.125 in (54.0 mm)	0.075 in (1.9 mm)
GR-AWID-0-0	3.375 in (85.7 mm)	2.125 in (54.0 mm)	0.031 in (0.8 mm)
GRMAG-AWID-0-0	3.375 in (85.7 mm)	2.125 in (54.0 mm)	0.031 in (0.8 mm)
KT-AWID-0-0	1.38 in (35.0 mm)	1.57 in (39.9 mm)	0.22 in (5.6 mm)
PW-AWID-0-0	Diameter: 1.0 in (25.4 mm) – bottom segment removed		0.047 in (1.2 mm)

Slots and Holes

- CS-AWID**: Contains a molded slot for clip-strap or lanyard. Do not drill or punch clamshell cards.
- GR-AWID** and **GRMAG-AWID**: Punch slots only at exact locations shown in the instruction sheet packed with cards.
- KT-AWID** and **PW-AWID**: Do not drill or punch anywhere.

Applications

- CS-AWID**, **GR-AWID** and **GRMAG-AWID**: Presentation by hand to the reader.
- KT-AWID**: Attachment to a key ring or keychain.
- PW-AWID**: Adhering to a card (usually not proximity) or to a non-metal device.

Options and Accessories

- Photo ID badge printing: Use a standard dye-sublimation card printer for CS, GR and GRMAG cards.
- Custom graphics: AWID can supply all credentials except KT-AWID with logo, multi-color art, and text.
- Card pouches, straps, lanyards, slot punches, etc.: Contact card supply houses.



18300 Sutter Blvd, Morgan Hill, CA 95037

Tel: (408) 825-1100 Fax: (408) 782-7402

<http://www.awid.com>